



## Quality of Excellence, presented by Sintec Optronics

### Fiber coupled high power diode laser

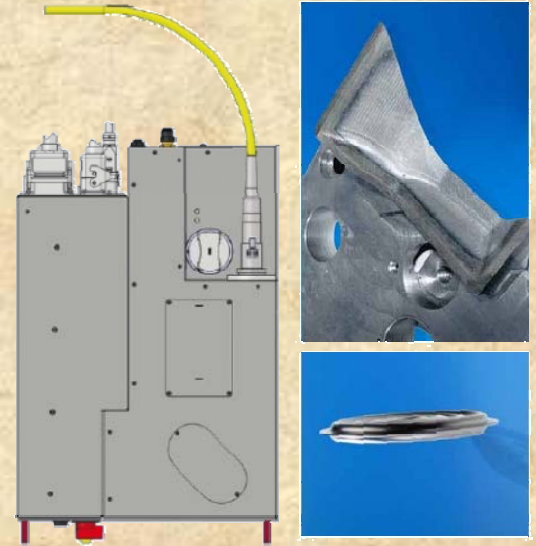
We offer high power fiber coupled diode laser with multiple options and combinations of output powers, wavelengths and fiber sizes. You can acquire a single diode laser module or a turnkey system that is integrated with a laser module and peripheral components; such as the controller, power source and cooler.

Features:

- 5-year warranty on diode laser elements
- Beam quality comparable to lamp-pumped Nd:YAG lasers
- Ideal for welding metals and plastics, as well as for soldering and brazing
- Fast integration in laser workstations
- Fiber-coupled lasers at a power level tailored to your needs
- 10 times higher wall-plug efficiency
- 3kW up to 20kW available

Applications:

- Laser welding, in automobile
- Laser cladding
- Laser surface treatment
- Laser cutting with higher capability

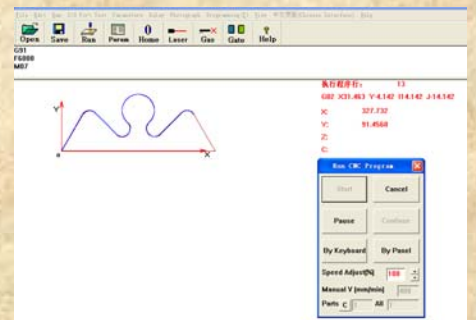


### CNC Control Card and Software

CNC2000 control software, developed using DSP technology, is based on Windows XP, 2000, 98, 95. It can control 4-axis via PCI-slot control card and widely used in laser cutting, welding and engraving machines.

Features:

- Edit program file
- Run testing
- Move axis manually
- I/O testing
- Parameters setting
- Home function
- Delay setting
- Photograph programming
- Program online



### Hand-held Thermal Imager

STIR-1113C Thermal Imager is highly mobile product with multiple functions for versatile applications.

Features:

- High mobility: small size, light weight, hand-held portability.
- Multiple functions and controls: image display/record/download; image preview/delete; auto/manual NUC; auto/manual gain control; brightness control; positive/negative image display; electronic zooming
- High environment adaptability and reliability

Applications:

- Night vision observation,
- rescue & search, patrol and surveillance



### Eye-safe Laser Range Finder

STIR-6243/6244 Eye-safe laser range finder is a highly mobile product with multiple functions for versatile applications.

Features:

- Eye safe laser
- High accuracy range finding
- Easy operation
- Simultaneous multiple targets measurement
- Small size and weight light

Applications:

- Patrol & reconnaissance;
- Engineering exploration;
- Surveying and mapping







## Wavelength Converter 532/355nm

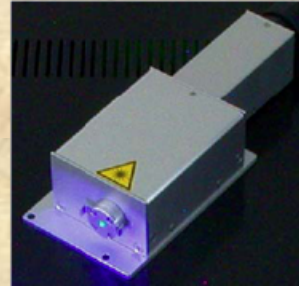
We supply wide range of products and services to its customers, including Single Crystals, a key material for today's leading-edge optical technology, Optical Devices based on such high-performance crystal materials and Optical Assemblies such as modules into which its quality crystal materials and devices as well as its design technology are all integrated.

Features:

- High SHG Power. By utilizing PPMgSLT devices, more than 1 W of SHG with stable operation is available.
- Wide Wavelength Range. Available from UV to MIR. It can be designed for arbitrary wavelength.
- Standard Wavelength 355nm, 532nm. Ask for customization for different wavelength.
- For Fiber Laser. Fiber lasers are rapidly expanding in the market. Wavelength convertor allows extension to visible and UV efficiently without sacrificing the original beam quality.

Applications:

- Replacement of Gas Laser
- Flow Cytometry
- Raman/Photoluminescence
- Fluorescence Microscope
- Custom Development of Pulsed and CW laser



532nm Converter



355nm Converter

## Pockels Cells (EO Q-switches)

Applications: OEM laser systems, Medical/cosmetic lasers, Versatile R&D laser platforms, Military & aerospace laser systems



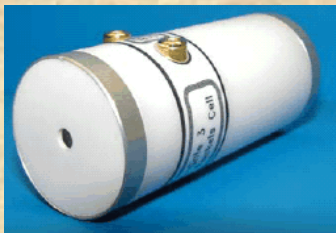
IMPACT Series EO Q-switches



QX Series EO Q-switches



IRX Series CdTe Pockels Cell



LightGate Series BBO Pockels Cell



RTP Electro-optic Q-Switch



Electro-optic Modulators

## Sintec News

Wuhan Sintec Optronics Co., Ltd has moved to Sintec Industrial Park in Wuhan. Please log to the website <http://www.518998.cn/> for more!



## Sintec Optronics Technology Pte Ltd

10 Bukit Batok Crescent #07-02 The Spire Singapore 658079

Tel: +65 63167112 Fax: +65 63167113

E-mail: [sales@sintec.sg](mailto:sales@sintec.sg), [sales@SintecOptronics.com](mailto:sales@SintecOptronics.com)

URL: <http://www.sintec.sg>, <http://www.SintecOptronics.com>