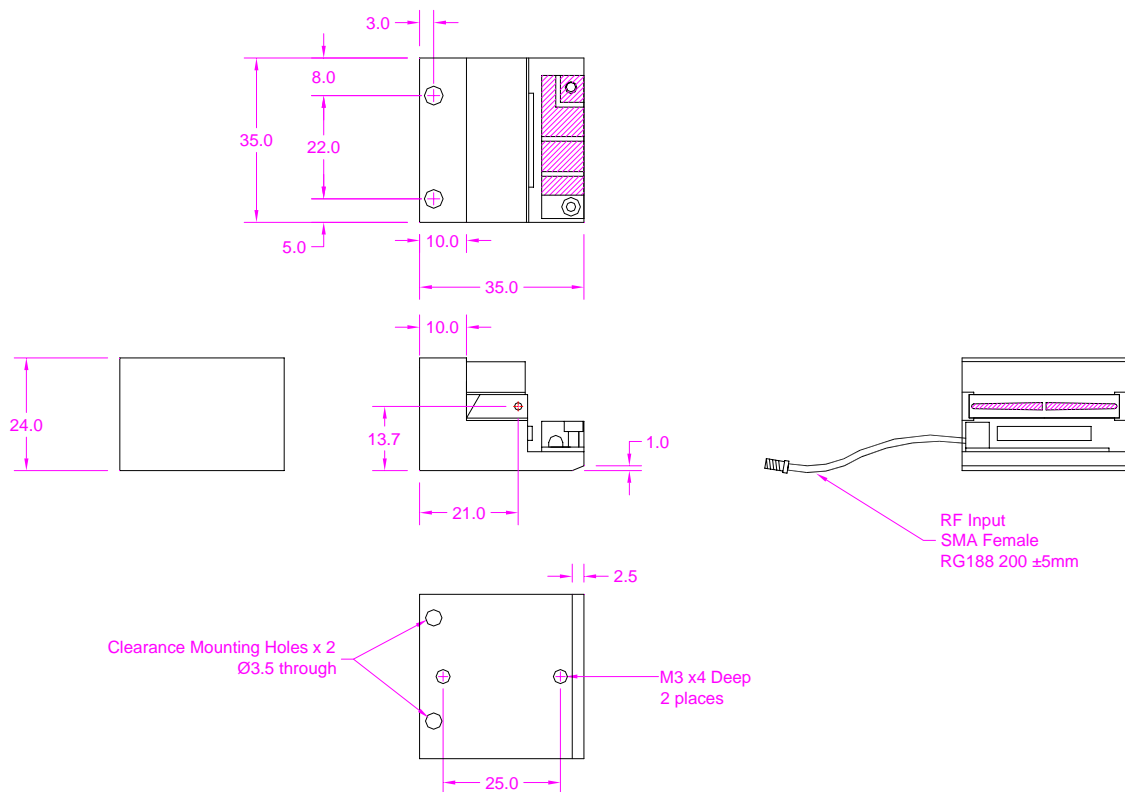


QS041-10G-SO3 Specification:

Model No:	QS041-10G-SO3
Device:	AO Q-Switch
Interaction material:	Crystal Quartz
Wavelength:	1064nm
Damage threshold:	> 1GW/cm ²
AR coating reflectivity:	< 0.2% per surface
Transmission:	> 99.6%
Frequency:	40.68MHz
Optical polarisation:	Linear, vertical to base
Active aperture:	1.6mm
Acoustic mode:	Compressional
Rise-time (10-90%):	113ns/mm
Loss modulation:	≥ 85%
Maximum recommended RF power:	20W
Housing:	Refer to drawing



Revision No: 1.0
Date: 31/03/09

Enabling Optical Technologies



Certificate No. FM 28257

Sintec Optronics Technology Pte Ltd
10 Bukit Batok Crescent #07-02 The Spire Singapore 658079
Tel: +65 63167112 Fax: +65 63167113
E-mail: sales@SintecOptronics.com or sales@sintec.sg
URL: <http://www.SintecOptronics.com> or <http://www.sintec.sg>